

XLI

- Zones 1, 2, 21, 22
- Single or double fixture
- Low wind resistance
- Obstruction warnings
- Fixed light

*Fresnel lens
polycarbonate cover*

*Painted aluminium
body*

NON APRIRE SOTTO TENSIONE. ATTENDERE 20 MIN.
PRIMA DI APRIRE L'APPARECCHIATURA USARE
CAVI ADATTI PER TEMPERATURE DI 145°C

DO NOT OPEN WHILE ENERGIZED, WAIT 20 MINUTES
BEFORE THE OPENING OF THE APPARATUS, USE
CABLES SUITABLE FOR A TEMPERATURE OF 145°C

XLI series fixed obstruction lighting fixture

XLI series fixed obstruction lighting fixture are ideal for chimneys, smokestacks, high buildings, cranes, bridges, radio/television masts, power line pylons, wind turbines, radar and telecommunication antennas and specifically for use in the petrochemical and oil industries.

Their small size, light weight, ease of installation and robustness mean that XLI series fixture do not deteriorate over time especially with exposure in salty environments. They are also resistant to the wind and the deposit of industrial dusts thanks to the low profile and aerodynamic properties of the body.

The use of halogen lamps offers additional benefits in terms of energy savings, lower maintenance costs and reduced environmental impact.

Application sectors:



Oil refineries



Chemical and petrochemical plants



Onshore plants



Offshore plants



Oil loading/unloading jetties



Combustible liquid depots



Perimeter lighting



Aircraft storage facilities Hangars

CERTIFICATION DATA

Classification:

Group II

Category 2GD

Installazione: EN 60079.14

zone 1 - zone 2 (Gas)

zone 21 - zone 22 (Dust)

Marking:

CE 0722 Ex II 2GD Ex d IIC T.. Gb - Ex tb IIIC T.. °C Db IP66

Certification:

ATEX CESI 12 ATEX 006

IEC Ex CES 07.0004

TR CU AVAILABLE

All IEC Ex e TR CU certification data can be downloaded at www.cortemgroup.com

Standards:

CENELEC EN 60079-0: 2012, EN 60079-1: 2007, EN 60079-31: 2009 and EUROPEAN DIRECTIVE 2014/34/UE IEC 60079-0: 2011, IEC 60079-1: 2007, IEC 60079-31: 2008
European Directive 2006/95 Low voltage
European Directive 2004/108 Electromagnetic compatibility
European Directive 2003/108 WEEE Waste electrical and electronic equipment
European Directive 2011/64 RoHS

Class temperature:



154°C (T3)

Ambient temperature:



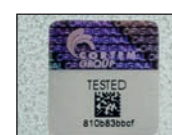
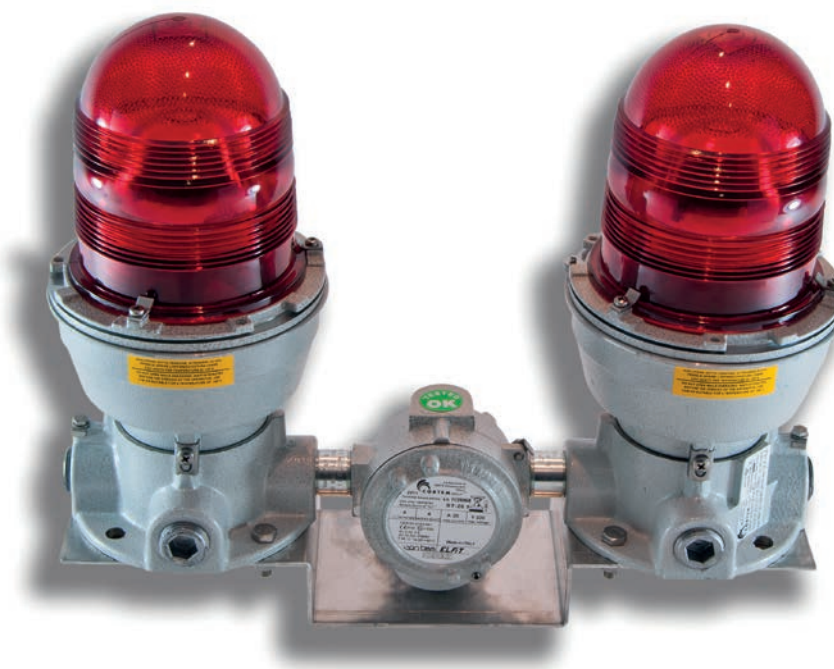
-20°C +60°C



Degree of protection:

IP66

XLI series fixed obstruction lighting fixture



ORIGINAL PRODUCT

MECHANICAL FEATURES

Body:	Low copper content aluminium alloy
Globe:	Shock and temperature resistant borosilicate glass sealed with aluminium shade ring
Fresnel lens:	Transparent polycarbonate, shock and UV resistant
Gaskets:	Silicone acid/hydrocarbon resistant
Mounting:	See "XLI series dimensional drawings"
Bolts and screws:	Stainless steel
Entries:	4 x 3/4" threaded NPT entry for XLI. 1 x 3/4" threaded NPT entry for XLIS and XLI...2
Coating:	Polyester coating Ral 7035 (light grey)
Corrosion Resistance:	The STANDARD of the aluminium alloy used by Cortem has passed the tests required by standards EN60068-2-30 (hot/humid cycles) and EN60068-2-11 (salt mist tests)

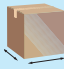
ELECTRICAL FEATURES

Lamp holder:	E27 ceramic
Rated voltage:	230 VAC
Rated frequency:	50/60 Hz
Connection:	Direct to lamp holder L, N, Pe. Max section 4mm ² The double lighting fixture (XLI-....2) comes supplied wired and sealed up to the junction box, the connection is made at the terminal board inside the terminal box L, N, Pe. Max section 4mm ²
Wiring:	Silicone rubber cables with glass braid protection against high temperatures

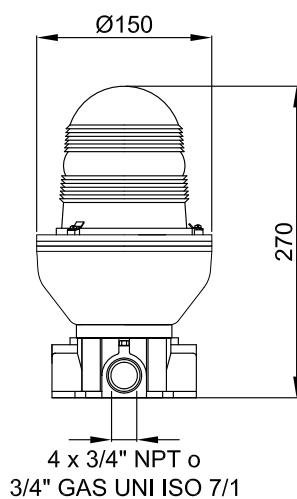
ACCESSORIES AVAILABLE / SPECIAL REQUESTS

Model for conduit or pendant mounting (code XLIS-V2301)
 Halogen lamp
 Cable gland: FGAB2NBK for armoured cable or FB2NBK for non-armoured cable
 GAS UNI ISO 7/1 thread
 Ex or watertight protected control panel
 Other colours: blue, yellow, green

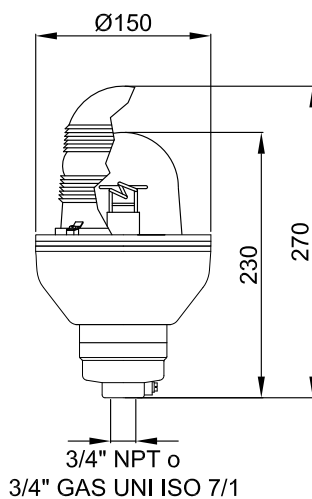
XLI series selection chart

Code	Lamp	Colour	Power supply	Weight kg	 mm
XLI-R2301	1	RED	230 VAc	2,40	160x150x330
XLI-R2302	2	RED	230 VAc	5,00	440x175x425

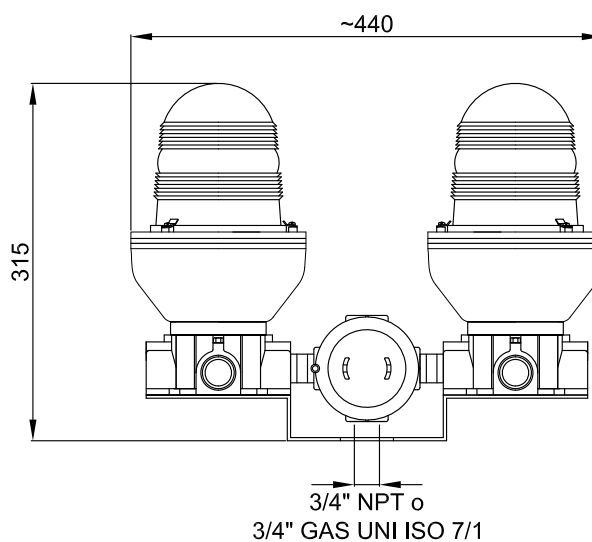
XLI-...
Structure mounting



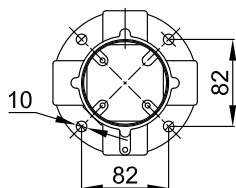
XLIS-...
Conduit or
pendant mounting



XLI-...2
Double obstruction lighting
fixture of obstruction



Close up of mounting



Dimensions in mm

DON'T FORGET TO ORDER THE ACCESSORIES

Example: Type of lighting fixture +
XLI-R1101

Pressacavo
FGAB2NBK

+ other ...see key



Accessories and spare parts available on request XLI series

ILLUSTRATION	DESCRIPTION	MODEL	FEATURES	CODE	KEY
	Globe with shade ring		Borosilicate glass globe Aluminium ring shade ring	G50-0389FCM	
	Polycarbonate Fresnel lens		Red	SR/1300	
			Green	SR/1301	
			Yellow	SR/1302	
			Blue	SR/1303	
	O-ring		Material: silicone	OR-4512SH70S	
	Ceramic lamp holder	E27	250V 4A	PORT E-27/X	
	Structure mounting		4 x 3/4" entries	G-0214	
	Pendant mounting		1 x 3/4" entry	G-0213	
	Halogen lamp	E27	105 W	LAMPAL105W	 
	Cable gland		For models and codes, visit www.cortemgroup.com	FB2NBK FGAB2NBK	 

Features of EC series electronic modules.. for XLI

GENERAL FEATURES

The Cortem designed control panels consist of aluminium or stainless steel Cortem junction boxes that are either fire-resistant or water-proof. These systems ensure that the units operate correctly as well as improving the reliability of warnings and offering alternative types of warning signals.

The covers of these panels can be fitted with different devices such as:

- Handle for the internal general magneto-thermal switch.
- Warning lights for faults in the main units.
- Test button for all units and warning lights.
- AUTOMATIC – MANUAL switch that in the “Manual” position switches on all the units without the consent of the “low light” switch module EC-01.

The control panel housings can contain different separated modules that, when wired in series, meet with specific customer requirements. The modules available for obstruction lighting fixtures are as follows (non ICAO - FAA) series XLI:

- **EC-01** Low light switch module. Adjustable from 1 to 150 lux. Operates with an external, integrated photocell
- **EC-03** Double XLI power supply circuit in which a halogen lamp is the main light and the other lamp is a spare. The rate of flash can be adjusted with a potentiometer and fitting of the spare lamp is instantaneous so as not to interrupt the service.
Power supply: 230 V AC
Time ON adjustable from: 0.6 - 1.8 sec.
Time OFF adjustable from: 0.6 - 3.5 sec.
- **EC-04** Double XLI power supply circuit in which a halogen lamp is the main light and the other lamp is a back-up unit.
Power supply: 230 V AC
- **EC-08** Circuit for powering a single XLI.
Power supply: 230 V AC
Time ON adjustable from: 0.4 - 1 sec.
Time OFF adjustable from: 0.4 - 2.2 sec.
- **EC-10** Power supply unit for EC-... with 230 VAC power supply.
This unit has both automatic and manual controls as well as a test button.
- **EC-12** Turns all the units ON and OFF with a an ON/OFF settings of 0.45 to 2.5 seconds.
- **EC-15** Circuit that powers a double XLI with rate of flash adjusted by potentiometer.
Power supply: 230 V AC
Alternate flashing: 0.3 - 3 sec.

Example of EC-04 module installation in EJB-1 model housing

